

DVVM

Double Column Vertical Machine



MAPLE

INTRODUCING THE DVM-2012



- High loading door opening.
- 4 large guideway to support the work table.
- Smallest layout on the market.
- Single piece protection cover.

DVM-SERIES
ATTACHMENT HEADS

Head Types:

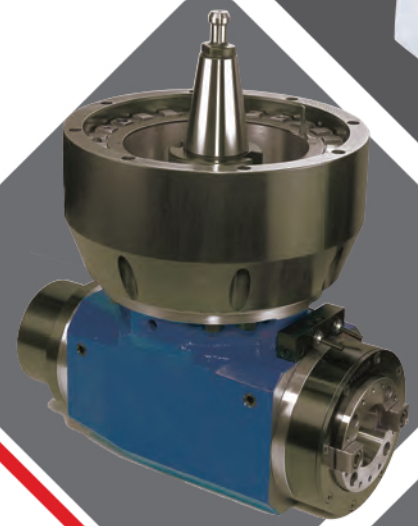
- Fixed - Fixed Heads
- Manual - Manual Exchange with Manual Indexing
- Semi Auto - Manual Exchange with Auto Indexing
- Fully Auto - Auto Exchange with Auto Indexing

1. Fixed 5 Face Milling Head
Auto Indexing at 5/2.5/1° degree angle.



2. 90 Degree Milling Head

It comes in three types:
Manual / Semi / Full Auto at 5/2.5/1° Degree Indexing



3. Universal Milling Head

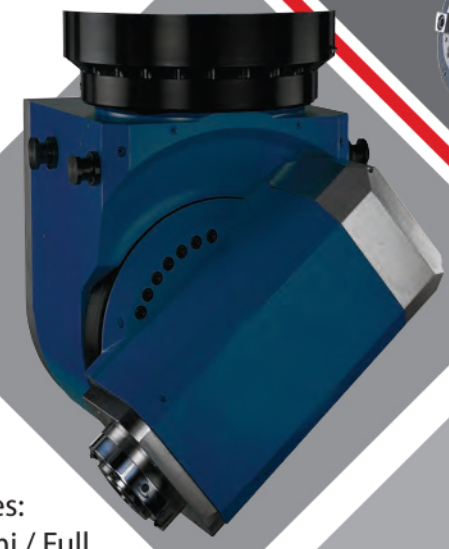
It comes in three types:
Fixed / Manual / Semi / Full Auto at 5/2.5/1° Degree Indexing.



4. Two Axis / C-Axis Milling Head

It comes in four types:
Fixed / Manual / Semi / Full Auto at 5/2.5° Degree Indexing

*Also comes in two axis continues.

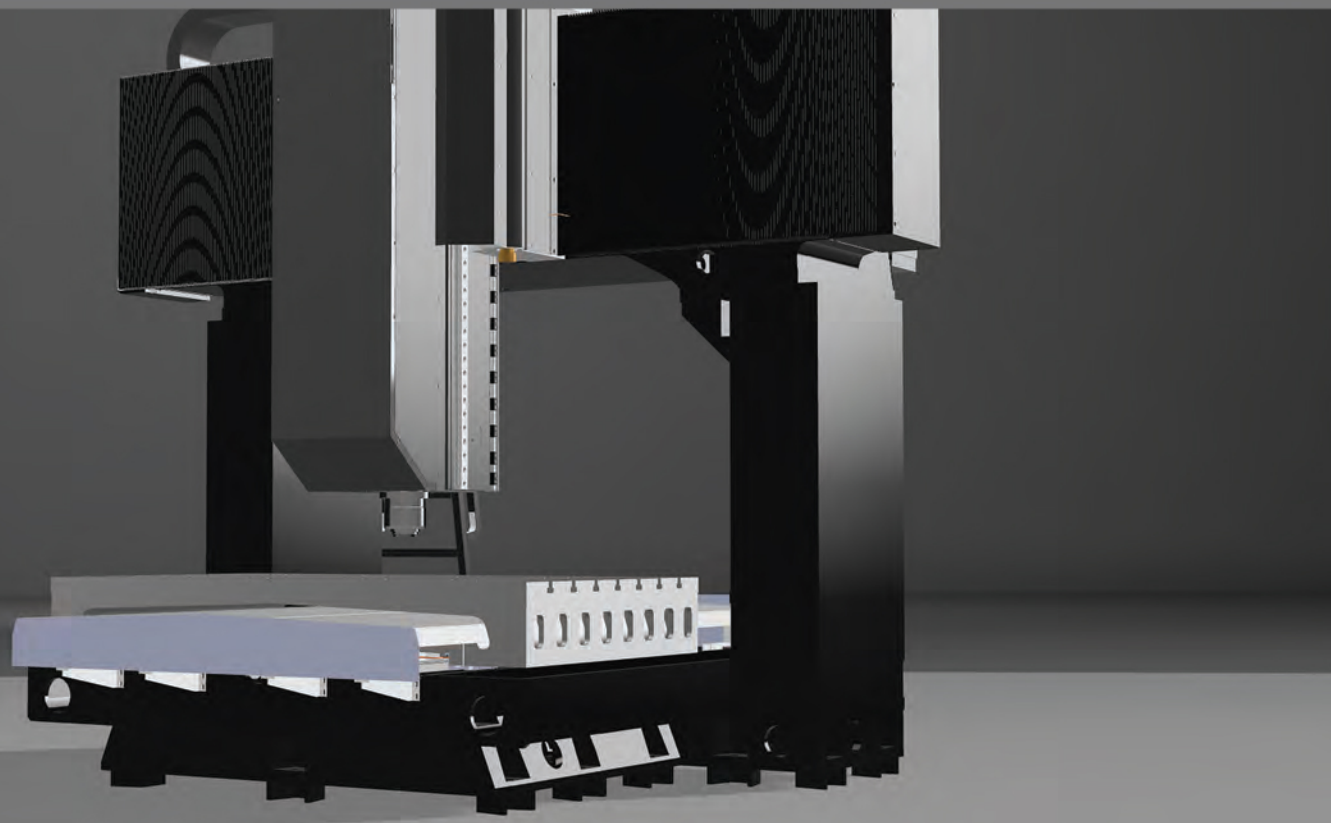


5. Extend Milling Head

It comes in two types:
Manual / Full Auto with 200 / 400 mm extension.

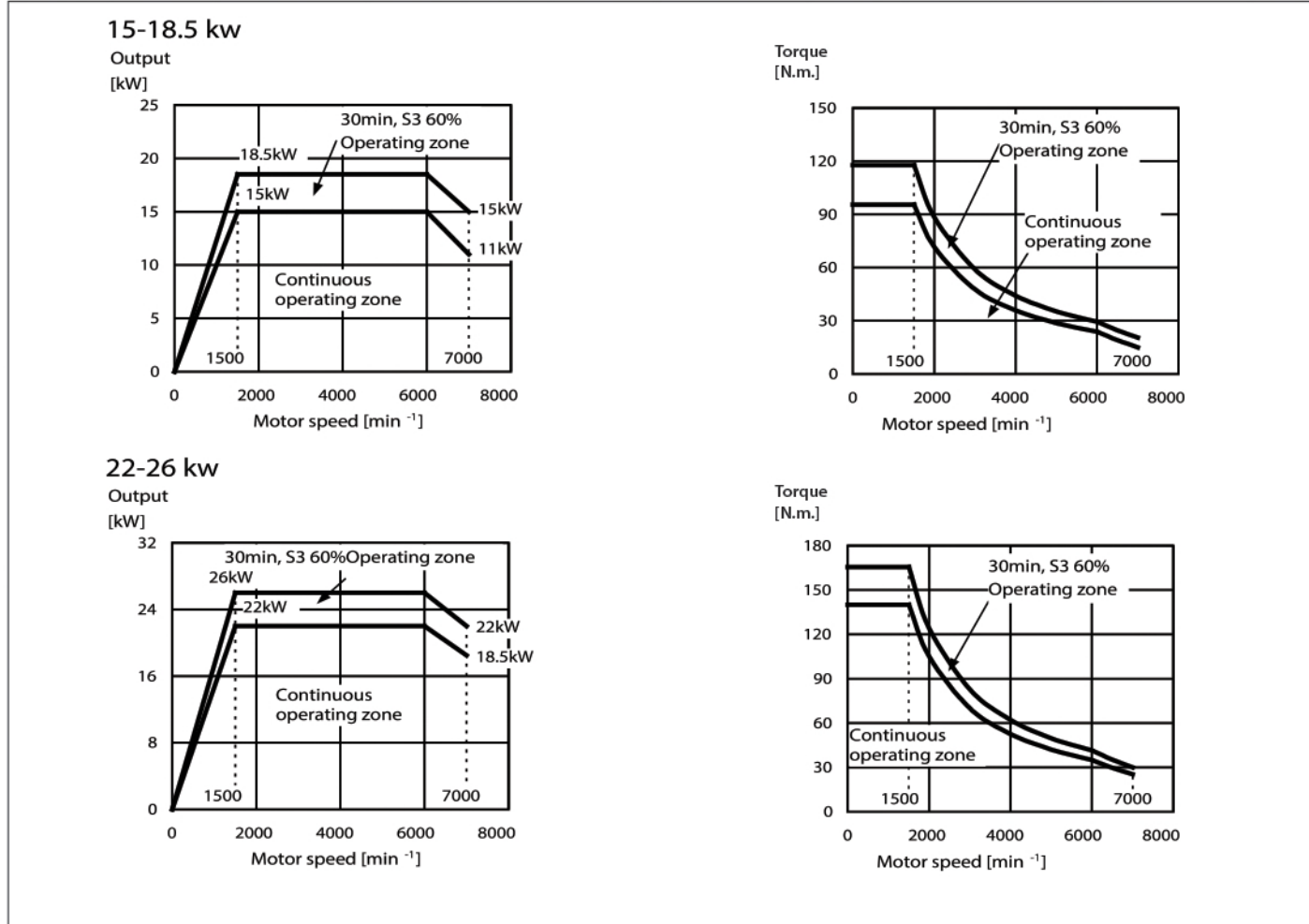


Unmatched Structure Design.

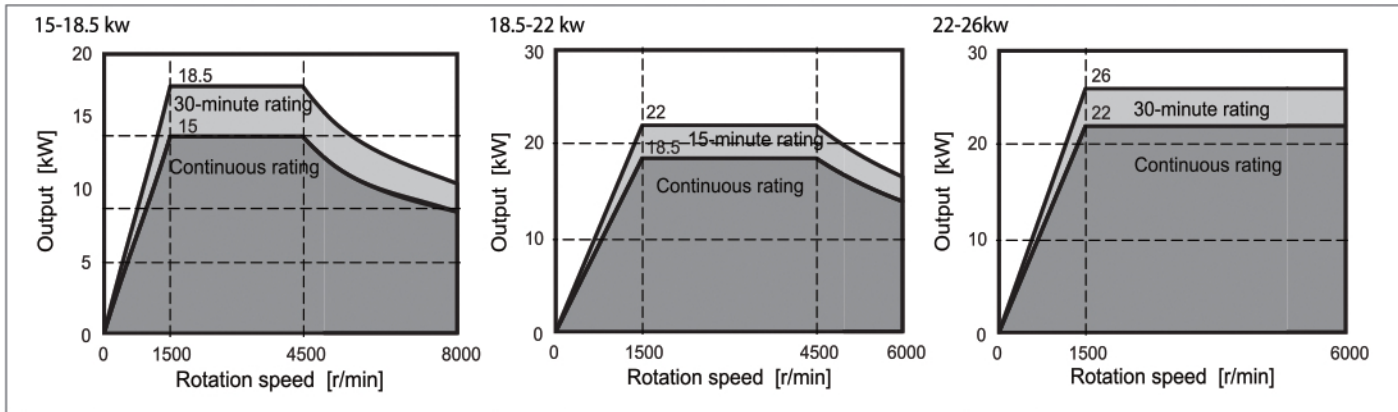


SPINDLE TORQUE CHARTS

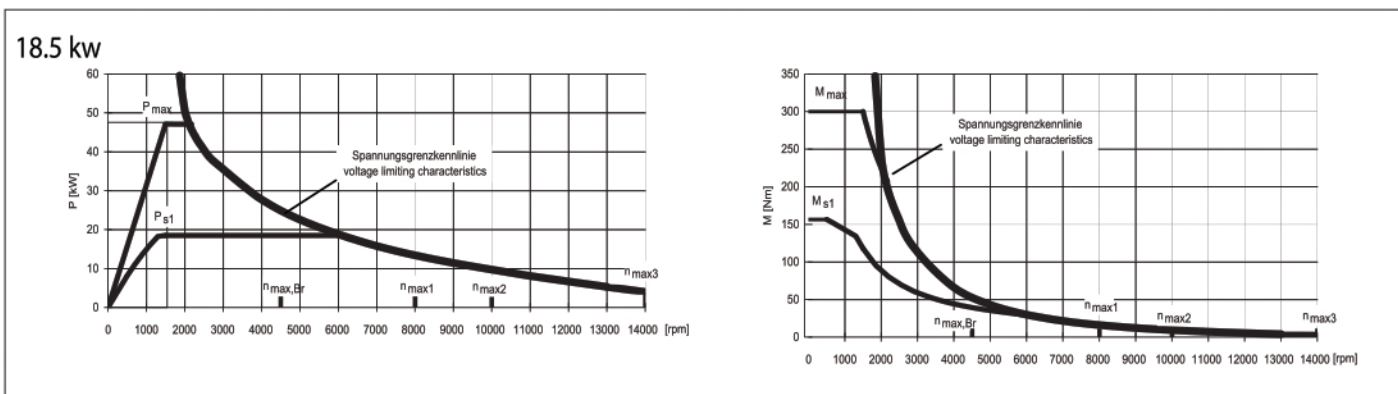
FANUC DRIVE



MITSUBISHI DRIVE



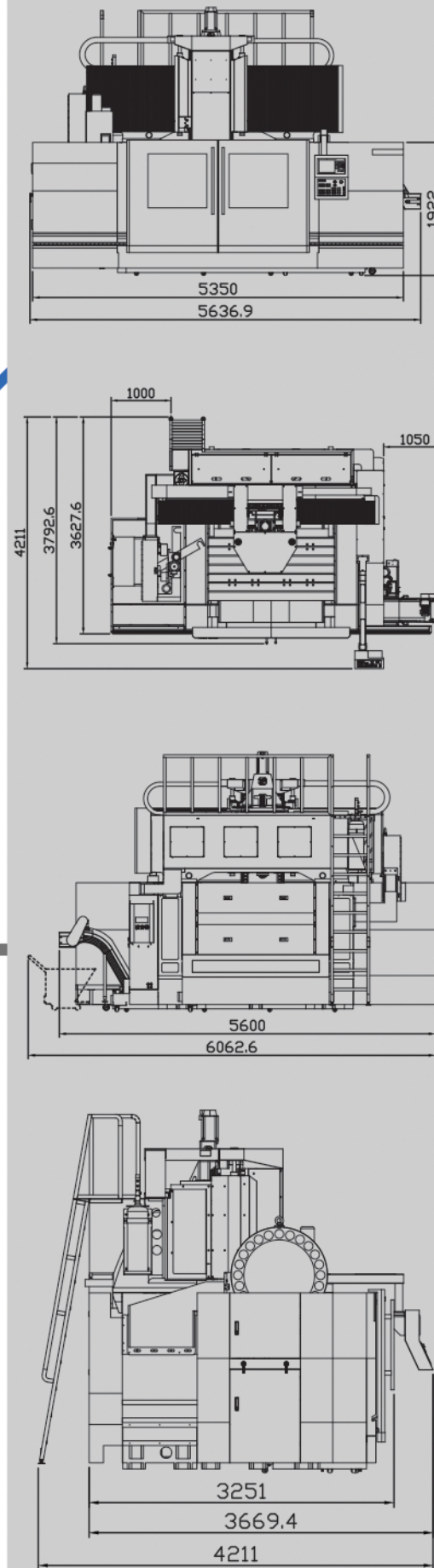
SIEMENS DRIVE



Specification

		DVM-2012
Travel		
X-Axis Travel	mm	2000
Y-Axis Travel	mm	1200
Z-Axis Travel	mm	860/1000 (Opt.)
Door Width	mm	2200
Spindle Nose To Worktable Surface	mm	150-1010 150-1150 (Opt.)
Worktable		
Worktable Size	mm	2100 x 1200
T-Slot	mm	128 x 22 x 7
Working Range	mm	2000 x 1200
Spindle		
Spindle Taper		BT50
Spindle Speed (Std. Belt)	rpm	6000
Spindle Speed (Opt. Gear)	rpm	6000
Spindle Motor	kw	15/18.5
Spindle Drive Type		Belt type
Three-Axis Drive Type		Direct Drive
Three-Axis (Mitsubishi)	kw	4.5/4.5/4.5
Three-Axis (Fanuc)	kw	3.0/3.0/3.0
Three-Axis (Siemens)	kw	7.7/5.2/5.2
Feedrate		
Cutting Feedrate	mm/min	6000
Rapid Feedrate X/Y/Z	m/min	20/20/12
Accuracy		
Positioning-(JIS 6338) (±)	mm	0.01
Repeatability-(JIS6338) (±)	mm	0.003
Tool Changer		
Type of Tool Shank		BT50
Tool Storage Capacity		24(30/32/40)
Max. Tool Diameter	mm	Φ125
Max. Tool Diameter Without Adjacent Tools	mm	Φ215
Max. Tool Length	mm	450
Max. Tool Weight	Kgs	20
Others		
Three-Axis guideway		Roller/Roller/Box
Air Required	Kg	6
Power Required	KVA	45
Coolant	hp	0.75
Max Weight On Table	T	6
Machine Weight	T	20

Layout





MAPLE



Endless Innovation



MAPLE TECHNOLOGY CO.,LTD.
No.3-1, Zhongshan Rd., Shalu Dist.,
Taichung City 43348,
Taiwan R.O.C.
Tel:+886-4-26150200 Fax:+886-4-26153906
Website:www.maple-tech.com.tw