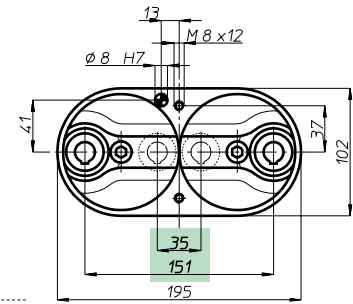
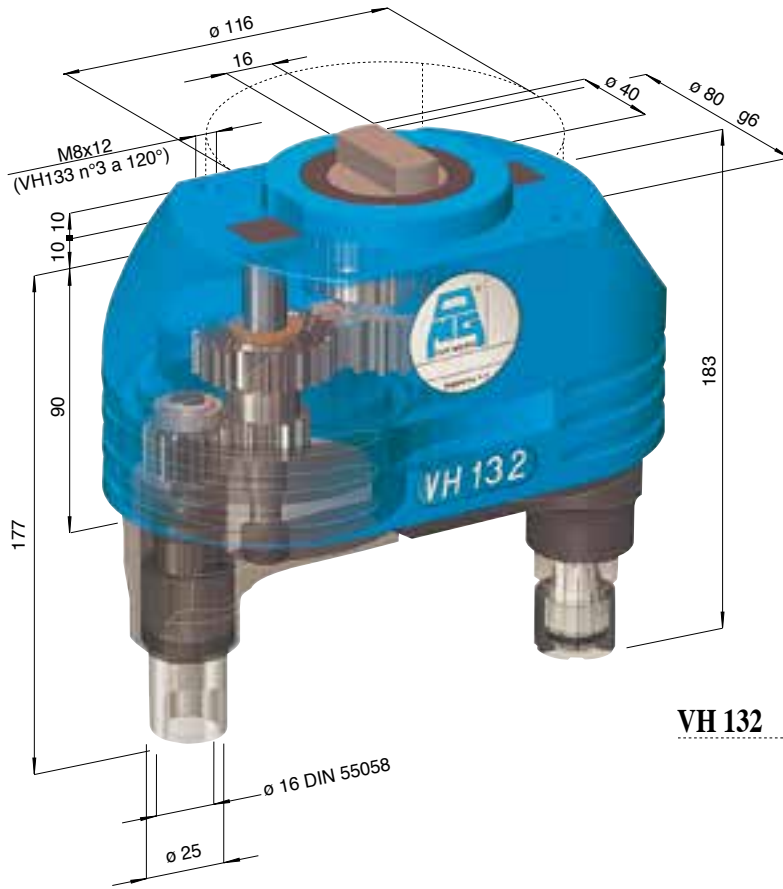


CAPACITA' FORATURA
DRILLING CAPACITY $\phi 14$

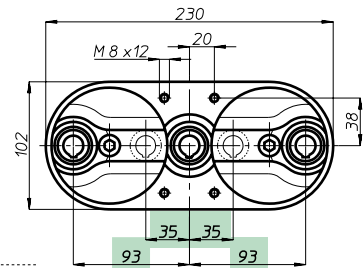
VH

modello 13

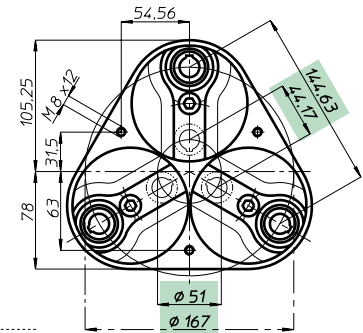
Teste multiple ad assi variabili • Variable axis heads



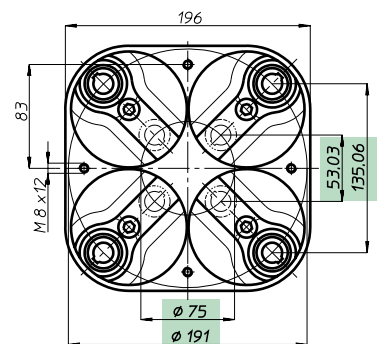
VH 132



VH 133 L



VH 133



VH 134

Testa modello Head type	VH 132	VH 133 L	VH 133	VH 134
Articolo Item	VH 132 P	VH 133 LP	VH 133 P	VH 134 P
Attacco utensile Spindle type	ER 20 - max $\phi 13$			
Articolo Item	VH 132 D	VH 133 LD	VH 133 D	VH 134 D
Attacco utensile Spindle type	DIN 55058 - $\phi 16$			
N. mandrini Spindles nr.	2	3	3	4
Campo di lavoro min.	35	35 + 35	$\phi 51$	$\phi 75$
Centre distances max.	151	93 + 93	$\phi 167$	$\phi 191$
Capacità foratura Drilling capacity	Acciaio Rm 500 N/mm ² - $\phi 13$			
Maschiatura Tapping	Ghisa GG25 - $\phi 14$			
Rapporto Ratio	M 12			
Velocità RPM	1 - 1			
Peso Weight	5,3	7,2	7	10,8

