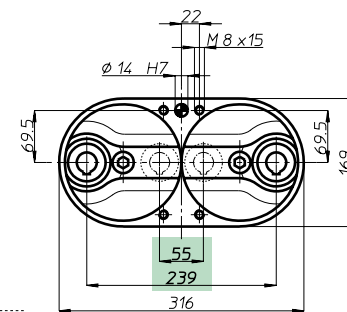
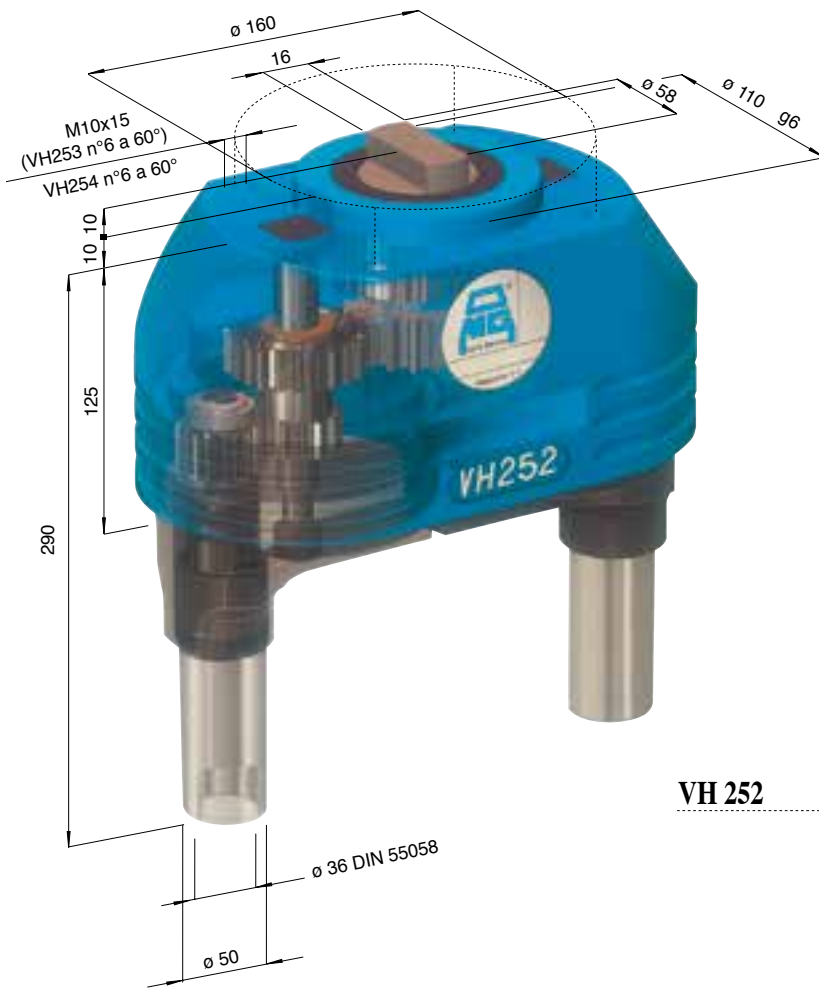


**CAPACITA' FORATURA**  
**DRILLING CAPACITY**  $\phi 28$

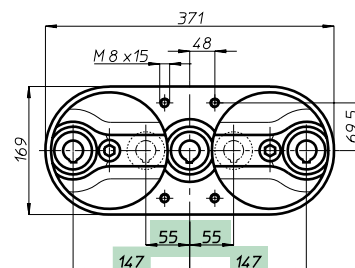
**VH**

**modello 25**

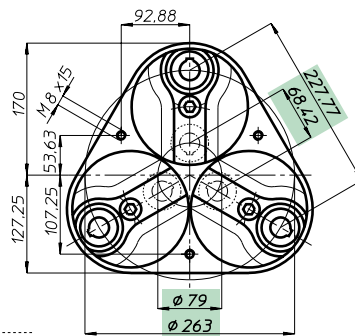
Teste multiple ad assi variabili • Variable axis heads



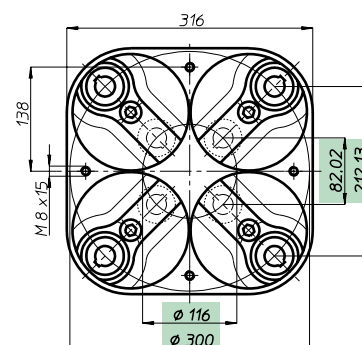
**VH 252**



**VH 253 L**



**VH 253**



**VH 254**

Testa modello Head type	<b>VH 252</b>	<b>VH 253 L</b>	<b>VH 253</b>	<b>VH 254</b>
Articolo Item				
Attacco utensile Spindle type	DIN 55058 - $\phi 36$			
Articolo Item	VH 252 D	VH 253 LD	VH 253 D	VH 254 D
Attacco utensile Spindle type	DIN 55058 - $\phi 36$			
N. mandrini Spindles nr.	2	3	3	4
Campo di lavoro min.	55	55 + 55	$\phi 79$	$\phi 116$
Centre distances max.	239	147 + 147	$\phi 263$	$\phi 300$
Capacità foratura Drilling capacity	Acciaio Rm 500 N/mm <sup>2</sup> - $\phi 25$ Ghisa GG25 - $\phi 28$			
Maschiatura Tapping	M 20			
Rapporto Ratio	1 - 1			
Velocità RPM	2.000			
Peso Weight	Kg. 27	32	39,5	52

